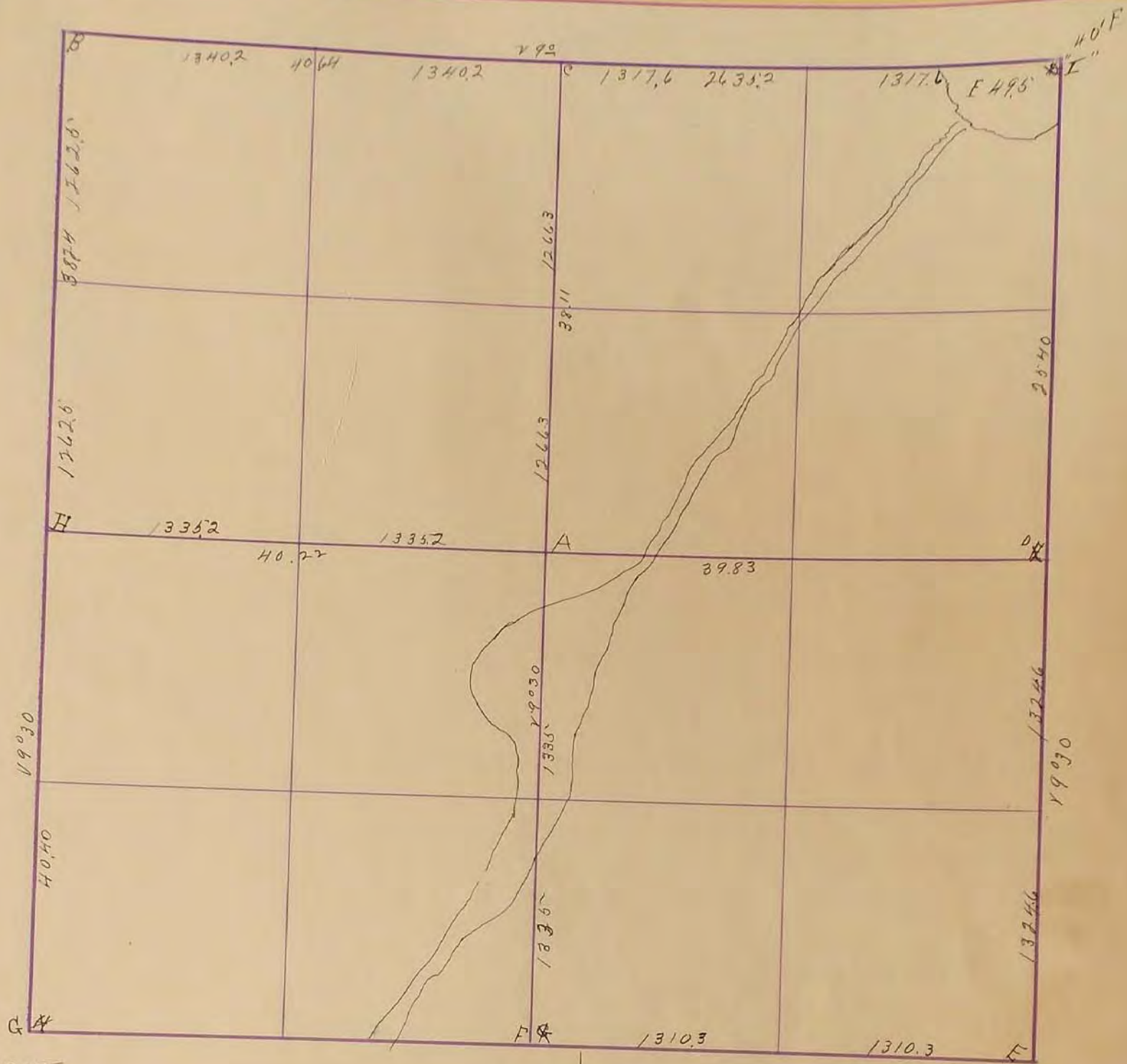


# MURRAY COUNTY.

Section 17  
10798 McGill-Warner Co., Blank Book Manufacturers, St. Paul.

Township 105

Range 39



Oct 2, 1898

- A Post mound & Pits
- B. Gov. Mound Iron stake
- C. Stone
- D. stake
- E. Gov. Mound
- F. Gov. Mound
- G. Stone
- H stone .50 east of corner R.P. N&C Cov. P. E. 41.78  
N&C T.P. S.E. 66.41 - N&C P.P. S.W. 58.16  
May 26, 78. "H" Located field stone (3'-3" below gravel surface) in mound, Placed 18" iron pin.
- I. Stone 11' N.W. of line between fence cor N.E. & S.W.
- June 2 1922 E concrete fence Post 33' W. + 33' N. of cor.
- Apr 1 1925 D. stone 10X10X16 @ F. cor. 32.6' E 33.31' W + 33.5'
- "G" Stone: R.P. Tack in Blazed Cor post SW 46<sup>2</sup>': R.P. Tack in cor post NW. 44<sup>2</sup>'
- "F" Stone: R.P. Concrete post South on Line 33<sup>2</sup>': R.P. Concrete post North on Line 33<sup>2</sup>'
- "E" Stone: R.P. Cor. of Concrete post SW @ Base 46<sup>2</sup>': R.P. Cor. of concrete post SE @ base 47<sup>2</sup>'
- "D" Stone: R.P. Edge of East concrete post @ Base 32<sup>2</sup>': R.P. Edge of West concrete post @ base 32<sup>5</sup>'
- "B" Stone: R.P. Cor. of Concrete post SE @ base 46<sup>2</sup>'. R.P. Cor. of concrete post SW @ base 46<sup>2</sup>'. N&C P.P. N.W. 45.77 May 26, 78

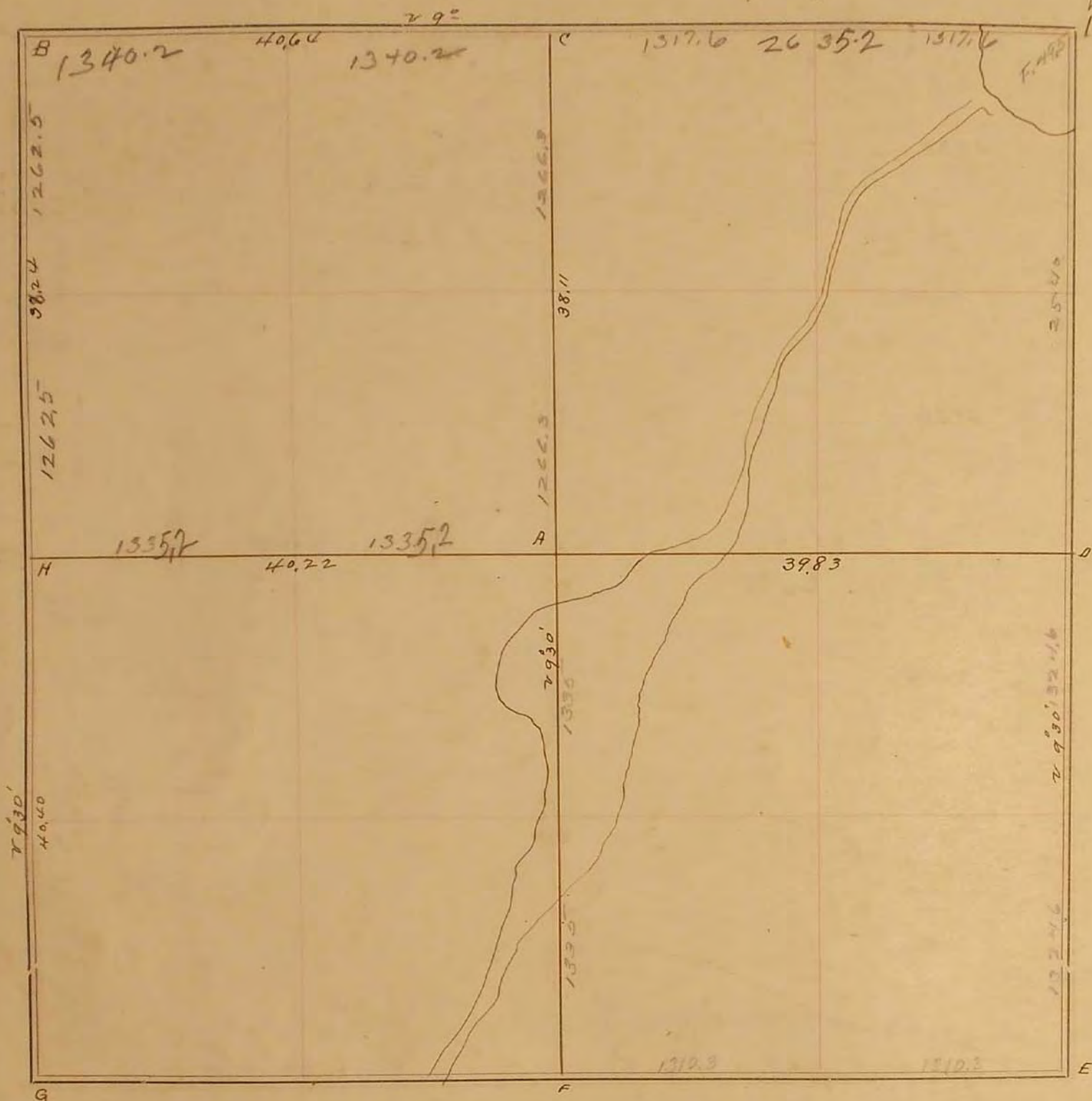
Sept. 24 1926

- Fence post in corner
- Stone & Iron stake under stone & burn fence 28'E 28'S
- Stone in old Gov. Mound
- Stone 10X10X16 @ concrete fence 46.7 S.W. - N.E. + S.E
- F. Stone, R.P. N&C. Fe P. N. - 95.6'; R.P. N&C. Gate post SW. 54.7'; R.P. N&C. Blazed Evergreen SE - 61.1', Sept. 1969, 215 acres
- March 28, 1922 - NE. cor. "I" located field stone 0<sup>5</sup> below gravel grade - did not place steel pin: R.P. N&C @ SE face of T.P., NW. 100<sup>38</sup>; R.P. N&C, P.P., SW. 66<sup>72</sup>; R.P. N&C., T.P., NE. 52<sup>21</sup>
- March 28, 1922 - E. cor. "D", located field stone 0<sup>5</sup> below gravel grade: R.P. N&C, brace post NE. 52<sup>35</sup>; R.P. N&C. brace post SE. 53<sup>35</sup>; R.P. N&C., fence post West 49<sup>9d</sup>
- March 28, 1922 - SE cor. "E" located engine valve top of bituminous mat: R.P. N&C, T.P., N.E. 59<sup>53</sup>; R.P. N&C., P.P., S.E. 60<sup>72</sup>; R.P. N&C., P.P., S.W. 79<sup>48</sup>
- May 26, 78 - "C" Located field stone 20" below grade Placed 10" iron pin above. R.P. N&C P.P. S.E. 36.00 N&C Cor. P. N. 35.23.

18  
19  
20  
21  
22  
23  
24  
25  
26  
27  
28  
29  
30  
31  
32  
33  
34  
35  
36

SURVEY No. 29

Section 17 Town 105 Range 39



FIELD NOTES.

Oct 2, 1898

- A Post, mound & Pile
- B Gov. mound & Iron stake
- C Stone
- D Stake
- E Gov mound
- F " "
- G Stone
- H " 50 East of corner

Sept. 24, 1926

Found post in corner  
Stone & iron stake under stone Column from 2571  
Stone in old gas mound  
Stone mound D corner from 419 SW-76+96  
"

June 2, 1922 E - concrete fence post 33' W. + 33' N. of cor.

April, 1925

- 1 - Stone 10x10x16  $\square$  E. cor 325 E. + 36, 31' W + 5' 6.
- 1 - Stone 11' NW of line between Fence cor. N.E. + S.W